

# *Trends in Agricultural Injury Occurrence in Canada*

Don Voaklander

*Canadian Agricultural Injury Surveillance Program*

Canada 



# Canadian Agricultural Injury Surveillance Program

- Data - Definition
  - Any injury resulting in death or hospitalization that occurred during activities related to the operation of a farm or that involved any hazard of a farm environment.
  - This includes motor vehicles that are being used for farm work.
- Data collection since 1990

# *Top Ten Causes of Agricultural Fatalities In Canada 1990-2004*

<b>Rank</b>	<b>Cause of injury</b>	<b>Number</b>	<b>Percent</b>
1	Machine rollover	348	20.9
2	Machine runover	311	18.7
3	Machine entanglement	138	8.3
4	Traffic collision	117	7.0
5	Pinned by machine	112	6.7
6	Animal-related	100	6.0
7	Struck by non-machine object	85	5.1
8	Drowning	53	3.2
9	Fall from height	49	2.9
10	Toxic substance/struck by machine object	47	2.8

# *Top Five Causes of Agricultural Fatalities Among Children Under Ten*

<b>Rank</b>	<b>Cause of injury</b>	<b>Number</b>	<b>Percent</b>
<b>1</b>	<b>Runover</b>	<b>75</b>	<b>47.5</b>
<b>2</b>	<b>Drowned</b>	<b>28</b>	<b>17.7</b>
<b>3</b>	<b>Caught under object</b>	<b>10</b>	<b>17.7</b>
<b>3</b>	<b>Animal-related</b>	<b>10</b>	<b>6.3</b>
<b>4</b>	<b>Struck by non-machine object</b>	<b>6</b>	<b>3.8</b>
<b>5</b>	<b>Pinned by machine</b>	<b>5</b>	<b>3.2</b>

# *Top Five Causes of Agricultural Fatalities Among Adults 20-64*

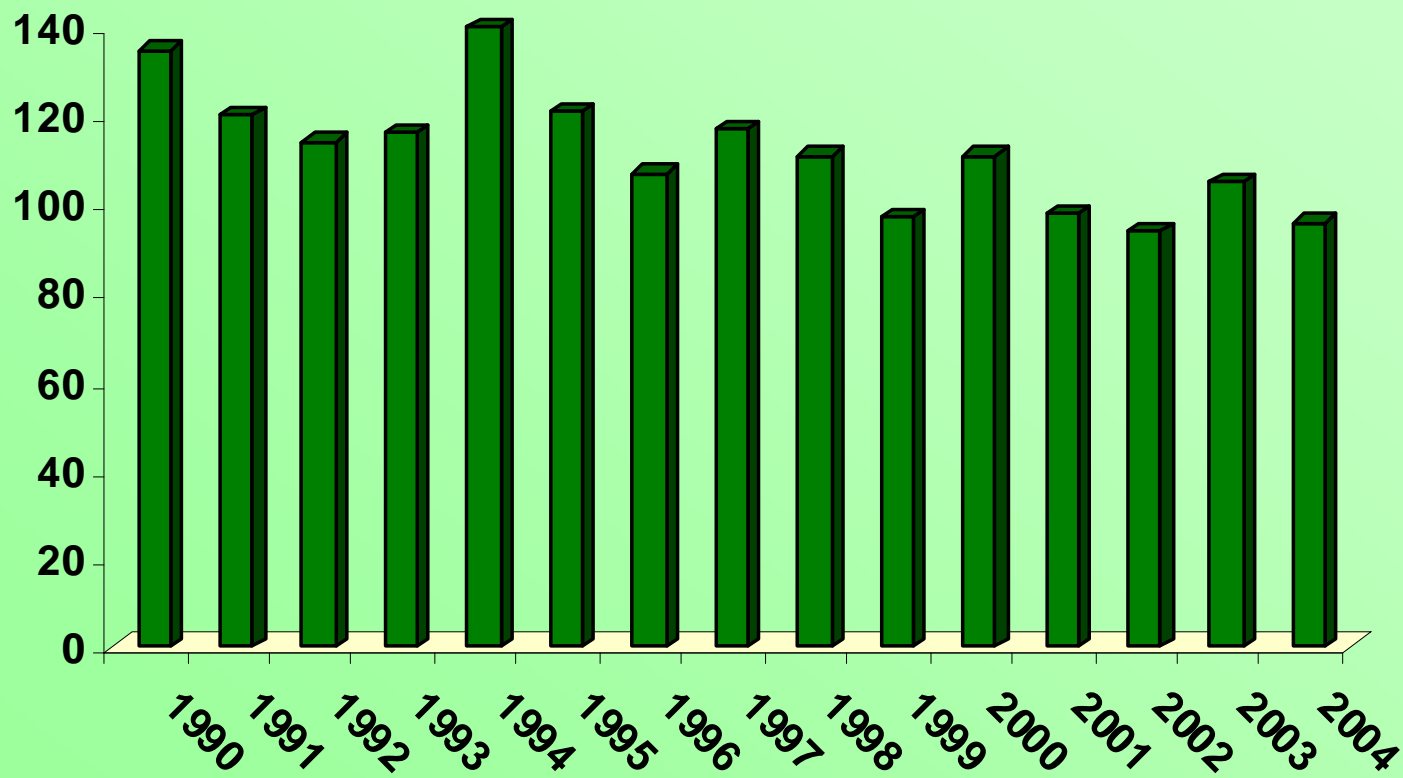
<b>Rank</b>	<b>Cause of injury</b>	<b>Number</b>	<b>Percent</b>
1	Machine rollover	199	22.3
2	Machine runover	97	10.9
2	Machine entanglement	97	10.9
3	Traffic collision	80	9.0
4	Pinned by machine	71	8.0
5	Struck by non-machine object	46	5.2

# *Top Five Causes of Agricultural Fatalities Among Adults 65 and Over*

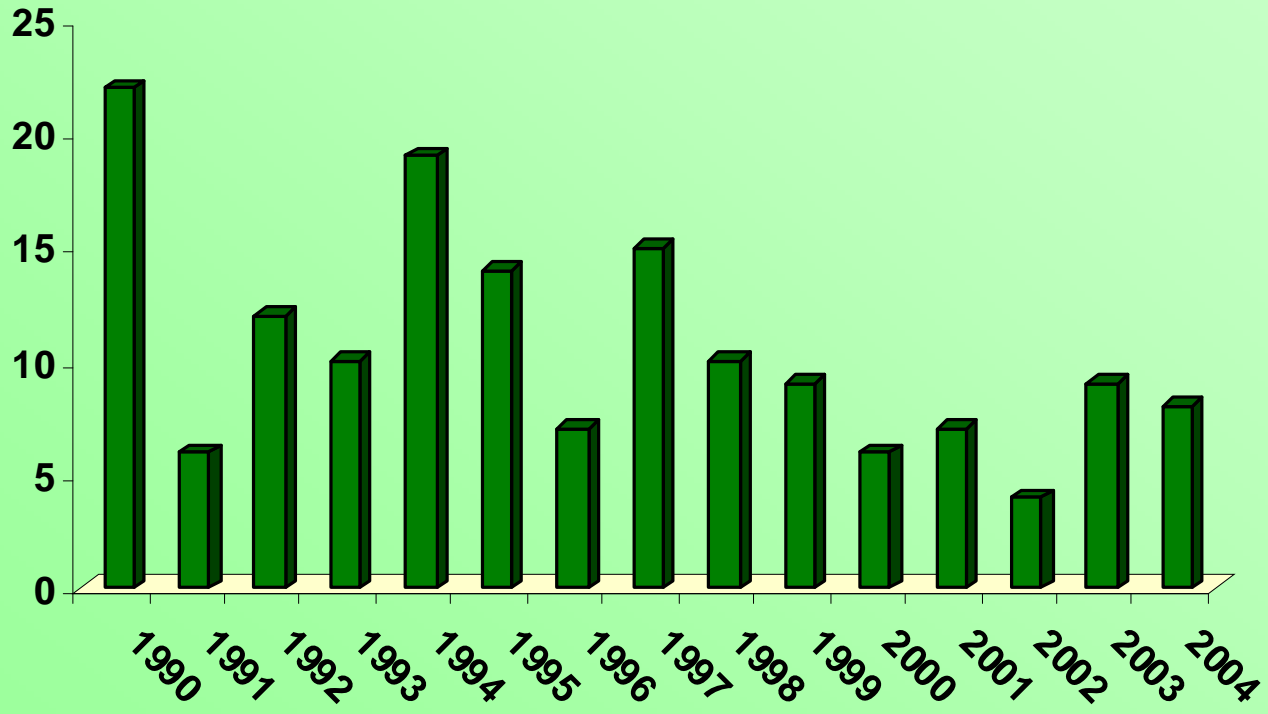
<b>Rank</b>	<b>Cause of injury</b>	<b>Number</b>	<b>Percent</b>
<b>1</b>	<b>Machine runover</b>	<b>114</b>	<b>24.4</b>
<b>2</b>	<b>Machine rollover</b>	<b>106</b>	<b>22.6</b>
<b>3</b>	<b>Animal-related</b>	<b>42</b>	<b>9.0</b>
<b>4</b>	<b>Pinned by machine</b>	<b>28</b>	<b>6.0</b>
<b>5</b>	<b>Machine entanglement</b>	<b>26</b>	<b>5.6</b>

# *Agricultural Fatalities in Canada*

## *1990-2004*

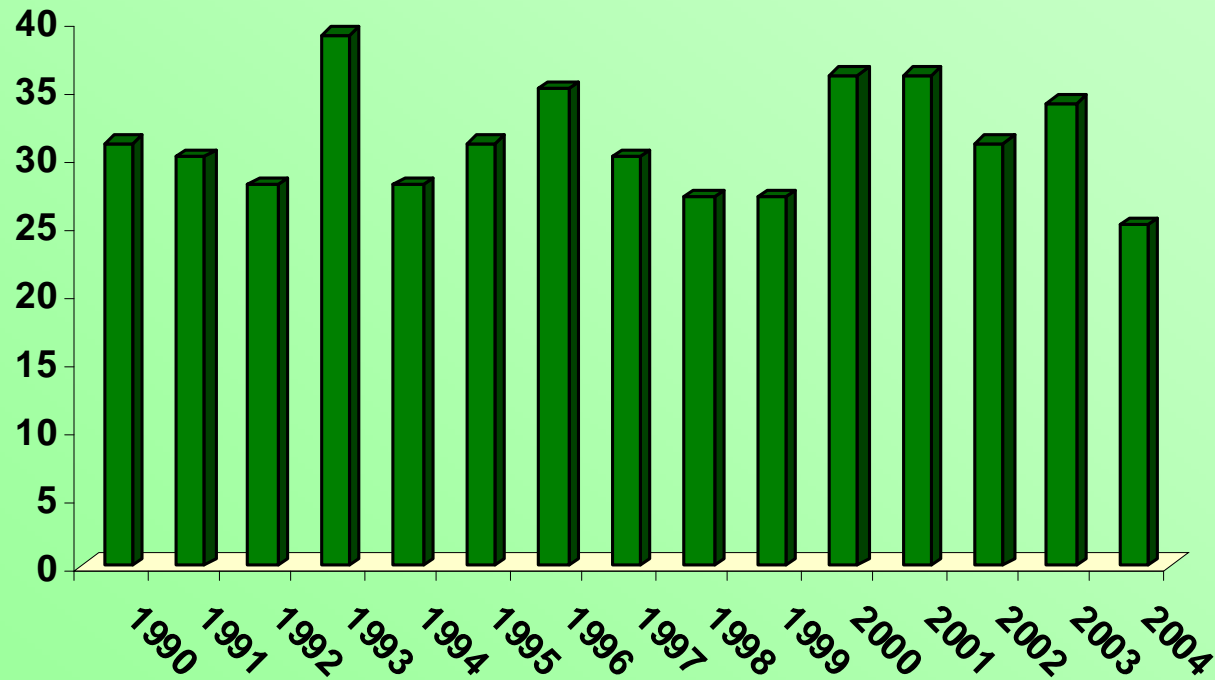


# *Agricultural Fatalities in Children Under Ten, 1990-2004*





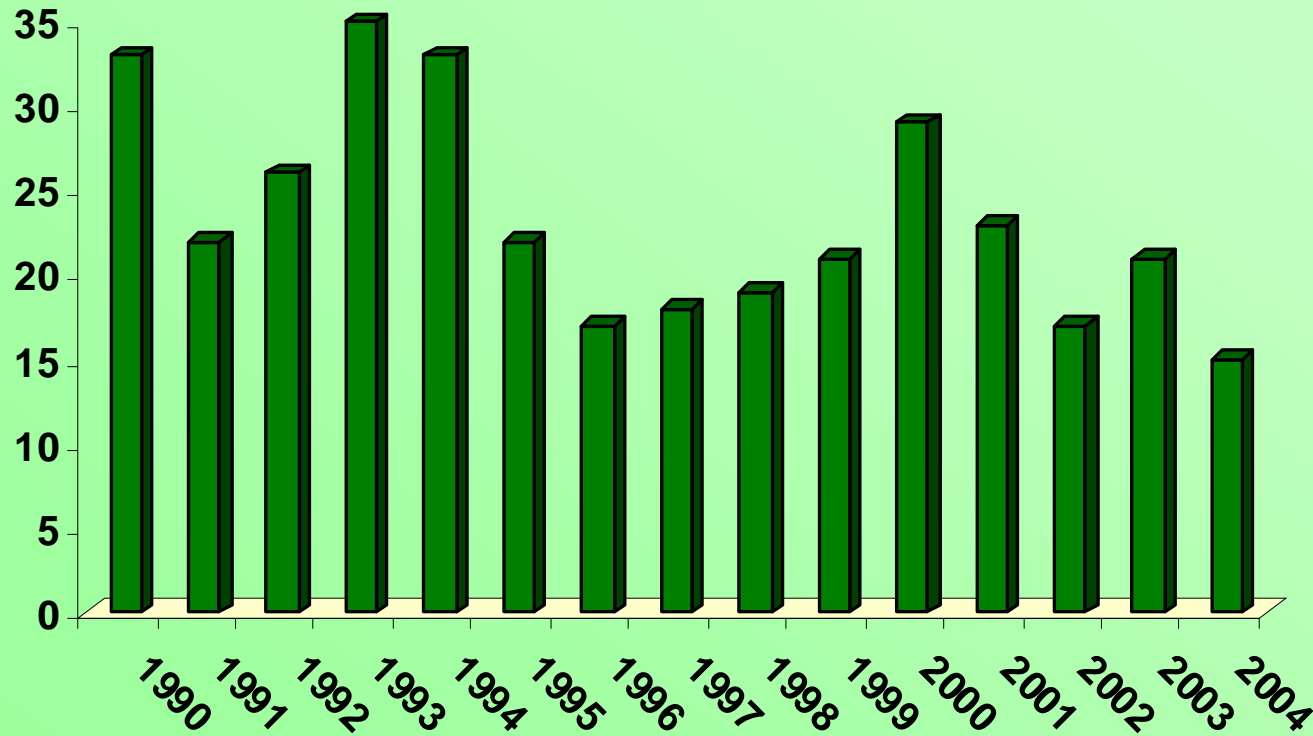
# *Agricultural Fatalities in Adults Aged 65 and over, 1990-2004*



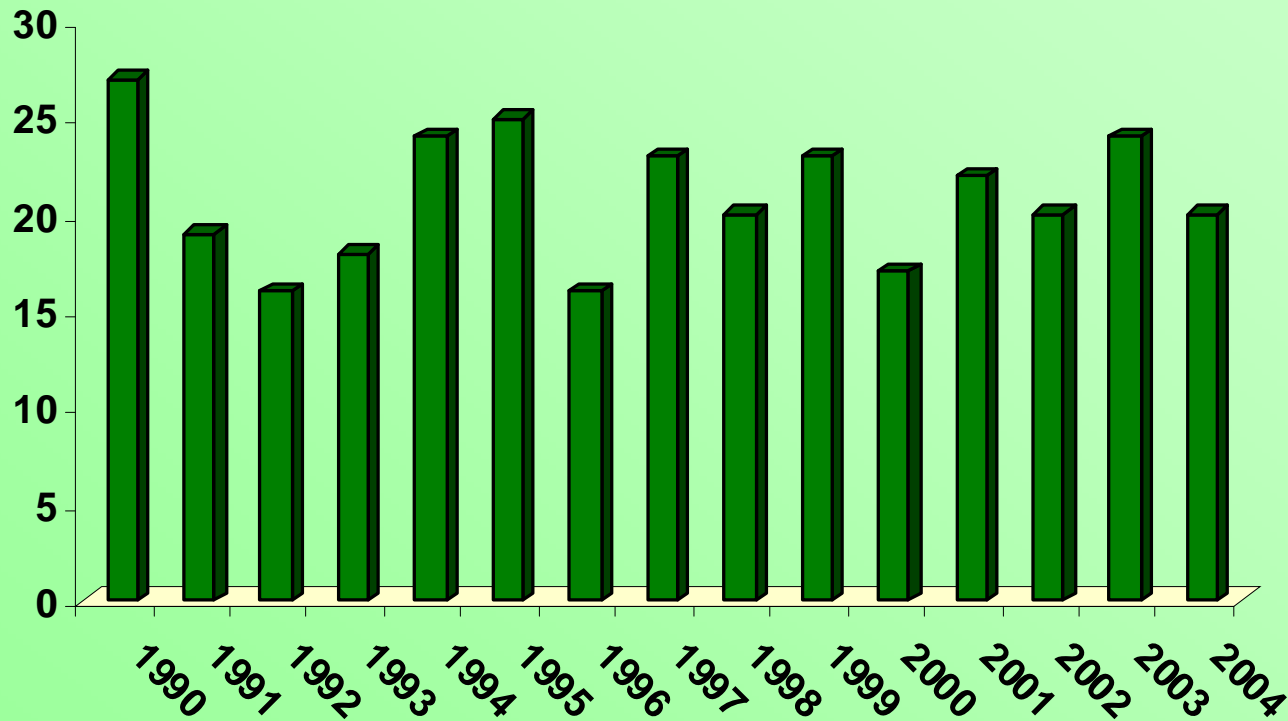
# *Agricultural Fatalities in Canada by Month 1990-2004*



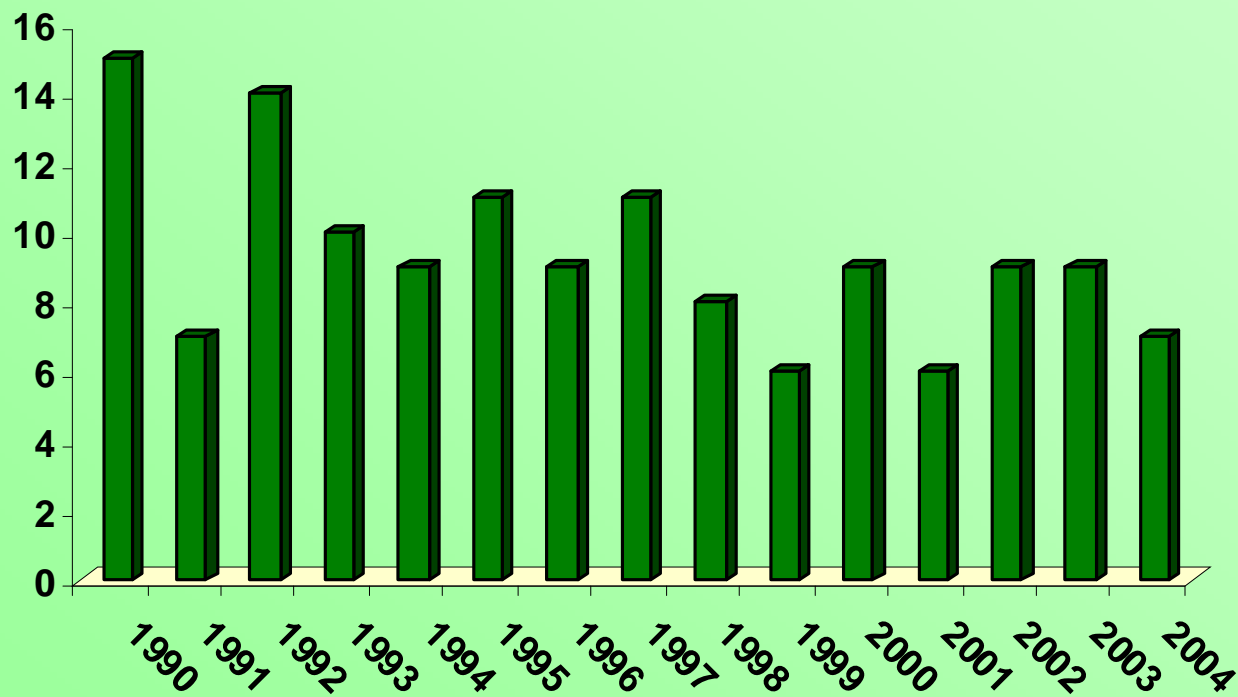
# *Agricultural Machine Rollover Fatalities in Canada, 1990-2004*



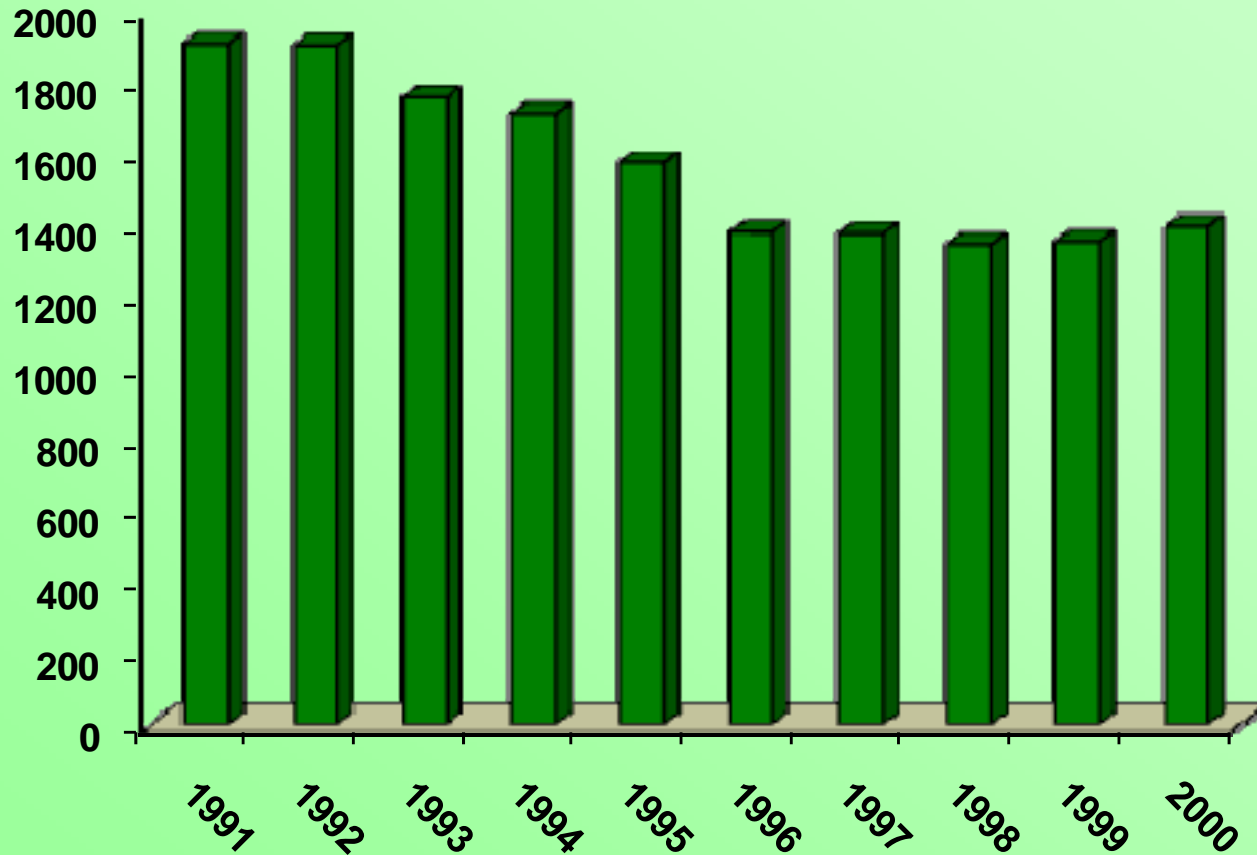
# *Agricultural Machine Runover Fatalities in Canada, 1990-2004*



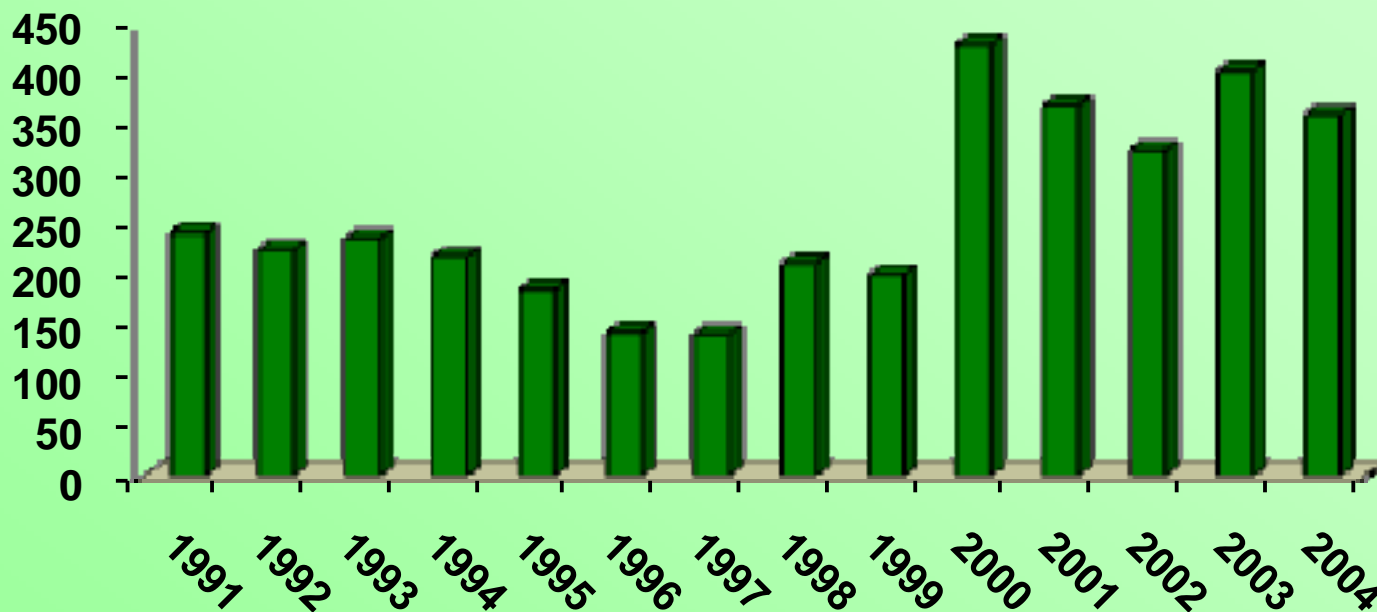
# *Agricultural Machine Entanglement Fatalities in Canada, 1990-2004*



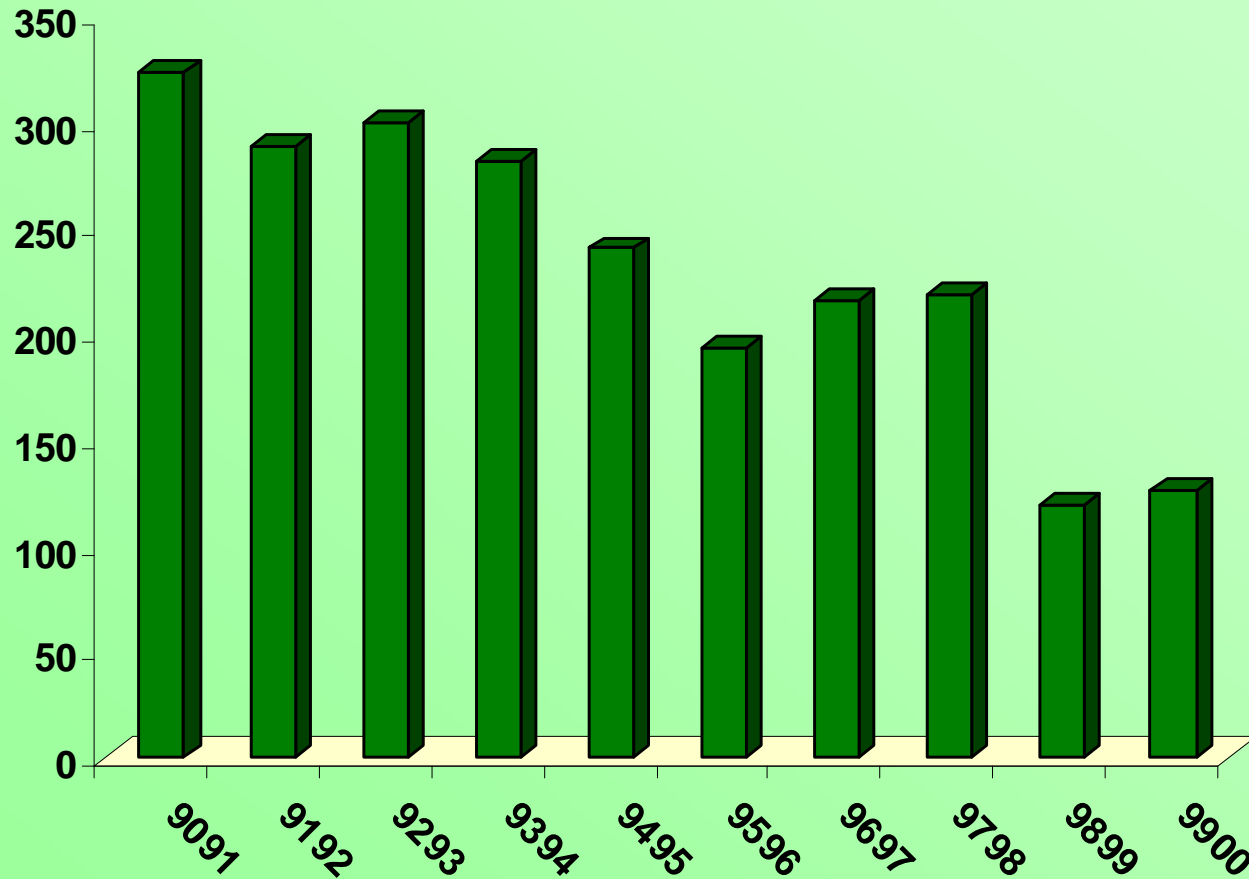
# *Agricultural Hospitalizations Identified in Canada, 1990-2000*



# *Agricultural Hospitalizations Identified in Ontario, 1990-2004*

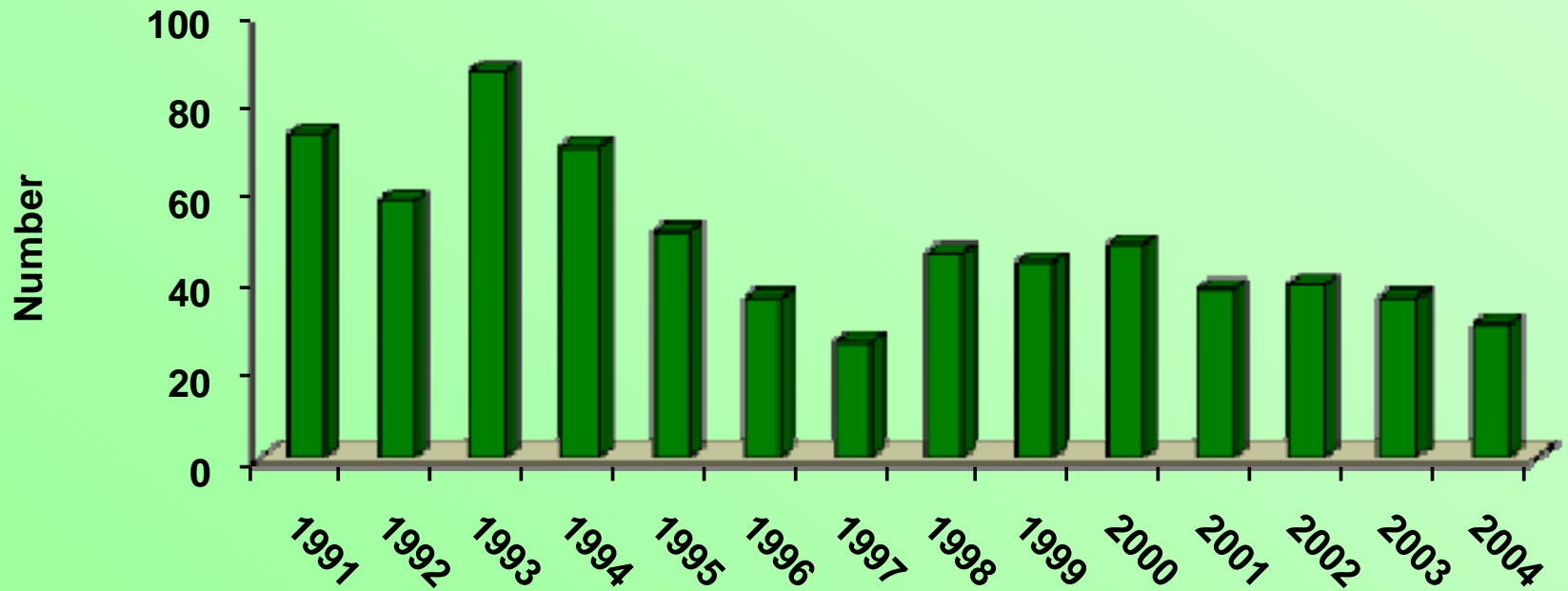


# *Hospitalized Agricultural Machine Entanglements in Canada, 1990-2000*



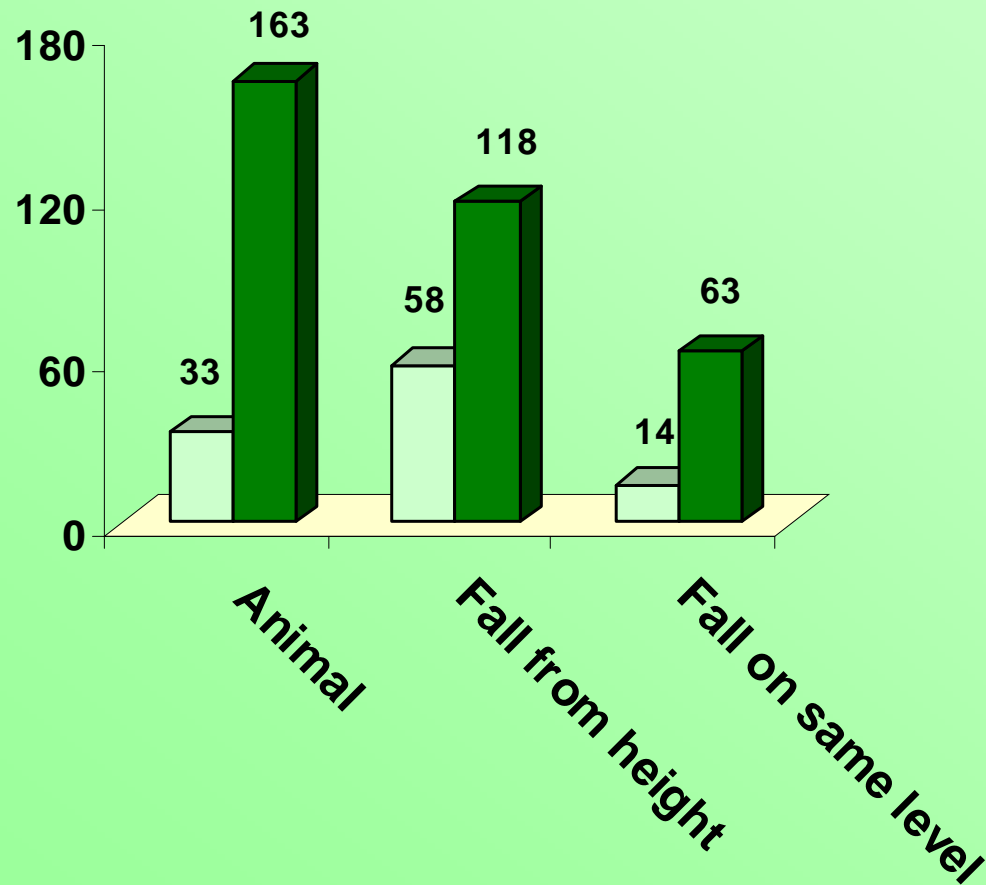


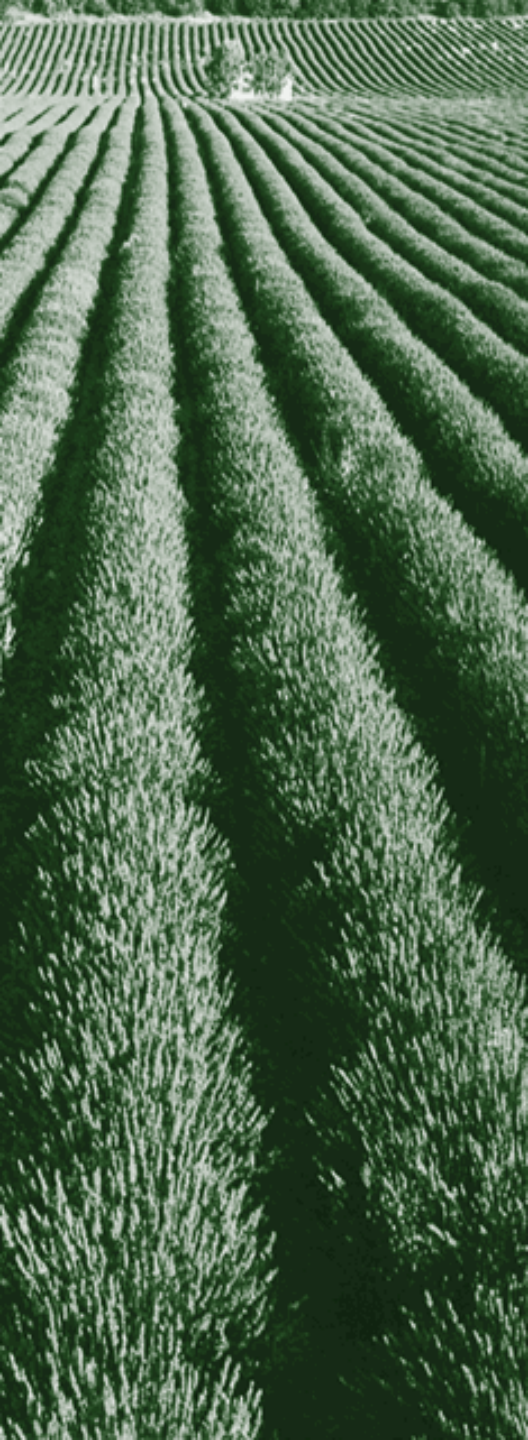
# *Hospitalized Agricultural Machine Entanglements in Ontario, 1990-2004*



# *Falls and animal-related agricultural injuries identified in Ontario under ICD 9 coding, compared with ICD 10 coding*

□ ICD 9 Apr 1997 to Mar 1999 ■ ICD 10 Apr 2002 to Mar 2004





*Questions?*



*[www.caisp.ca](http://www.caisp.ca)*