

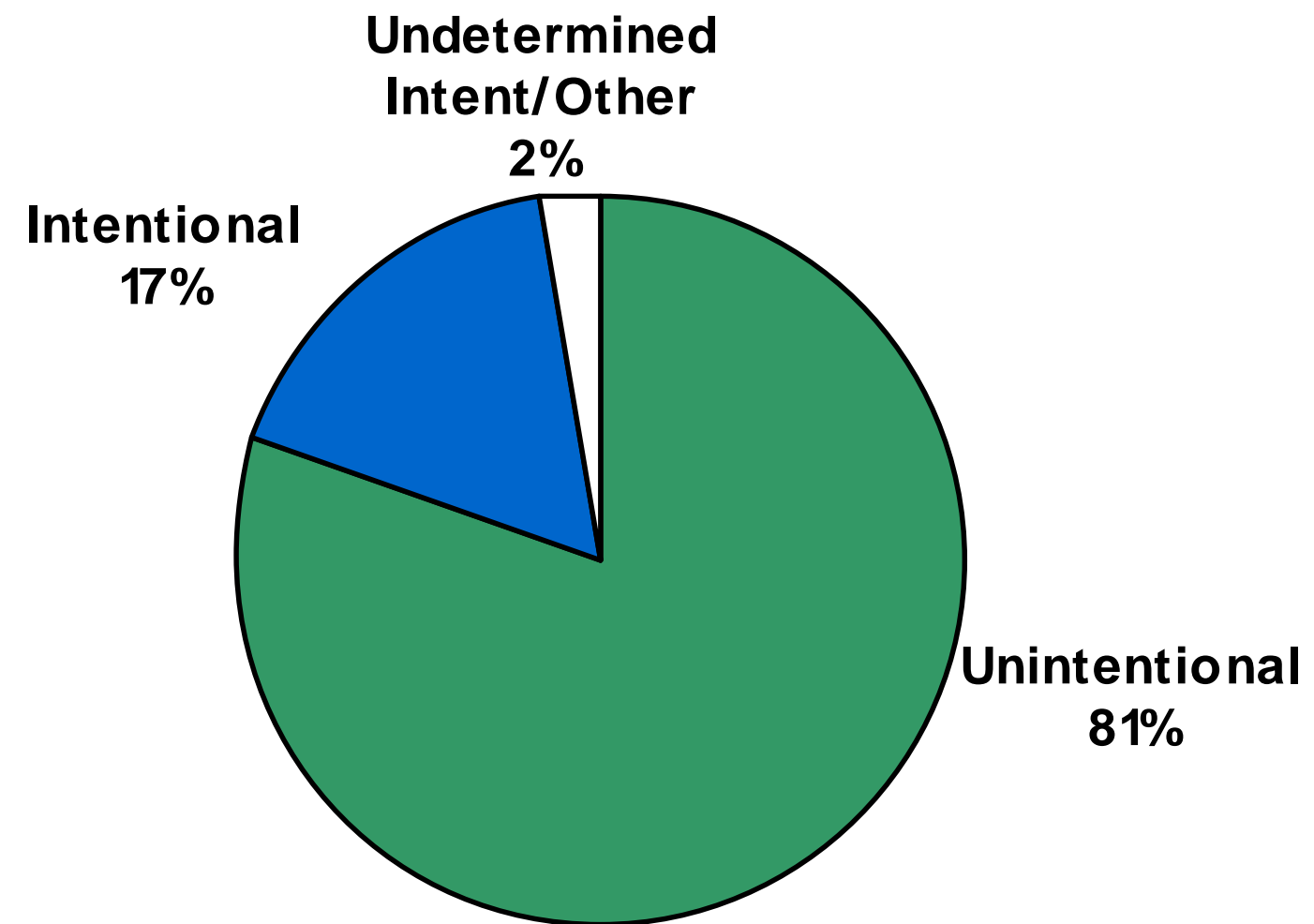
Canadian agricultural fatalities 1990-2008

presented by Don Voaklander PhD, Professor and Director, Alberta Centre for Injury Control and Research,
School of Public Health, University of Alberta

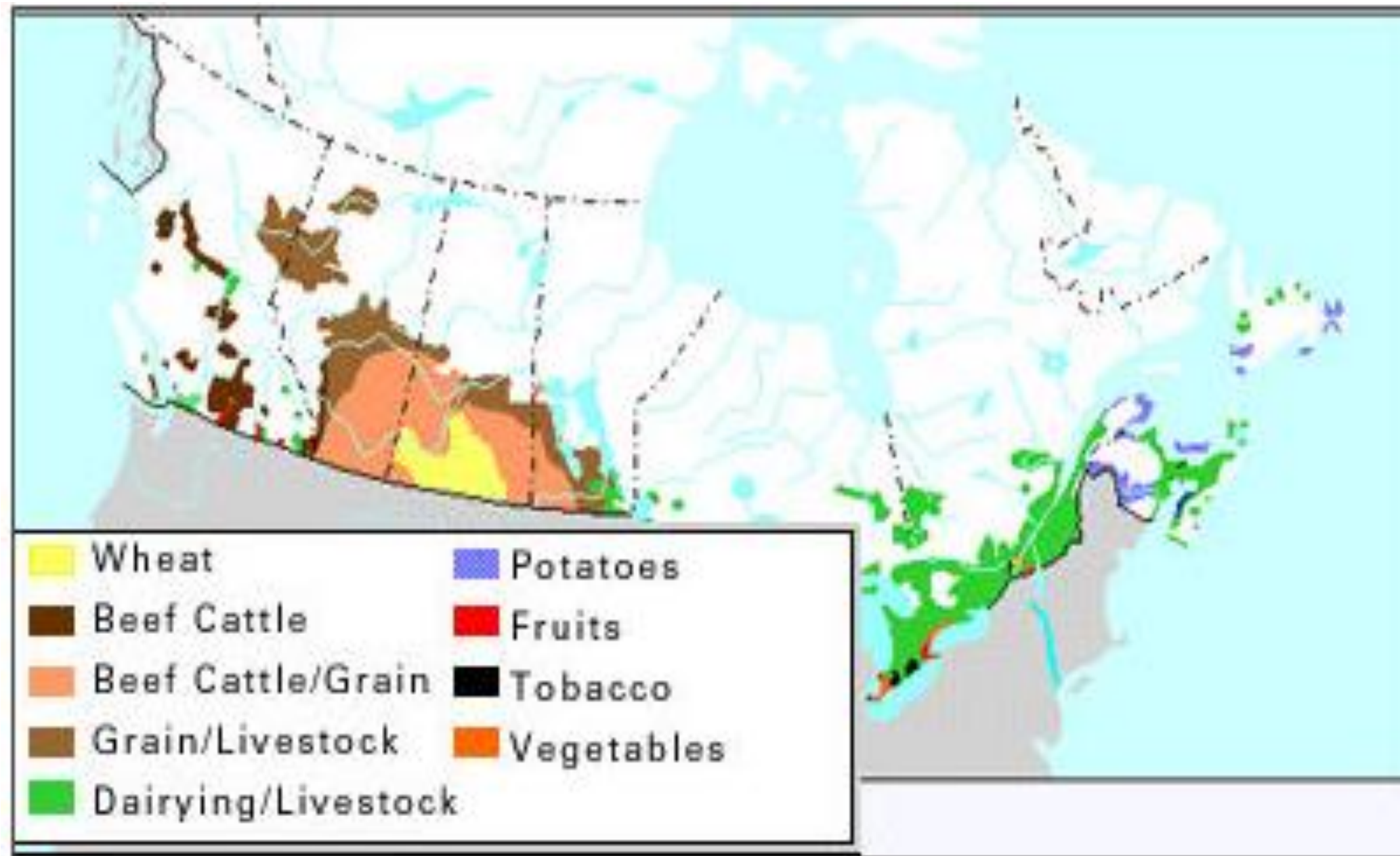
who, where, when and so what?



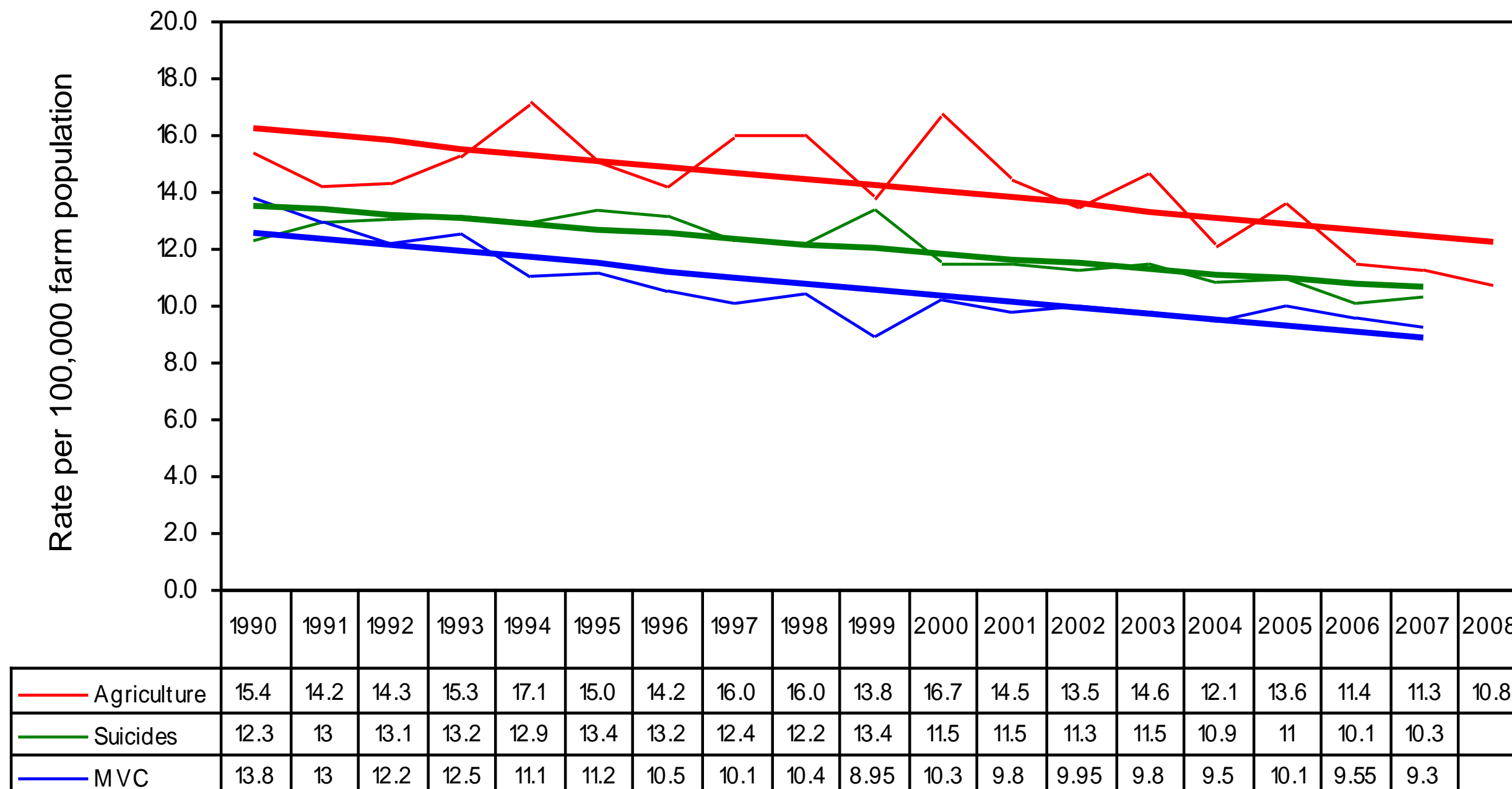
Economic Burden of Agriculture-Related Injuries in Canada



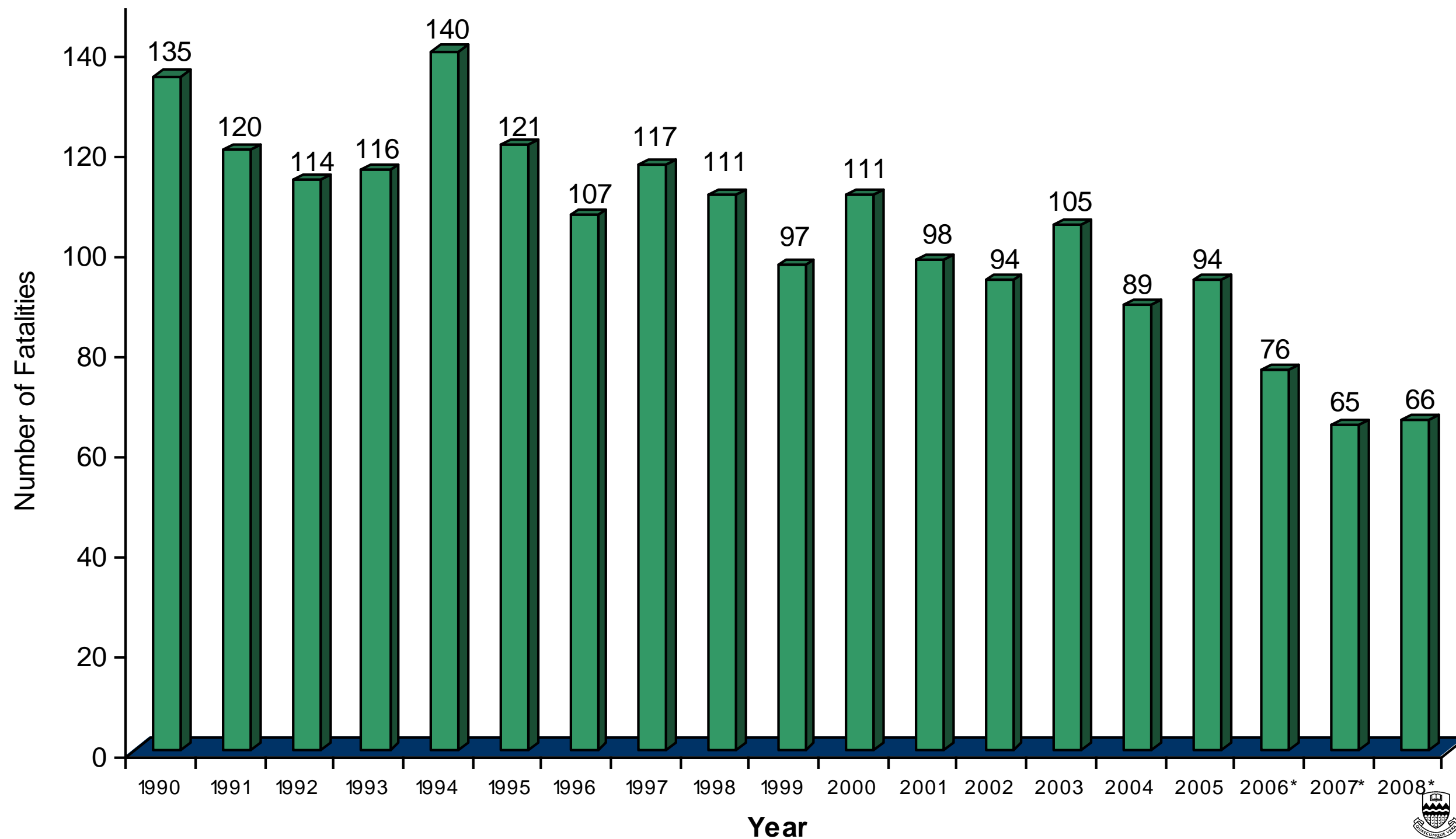
Agriculture Area and Use of Land



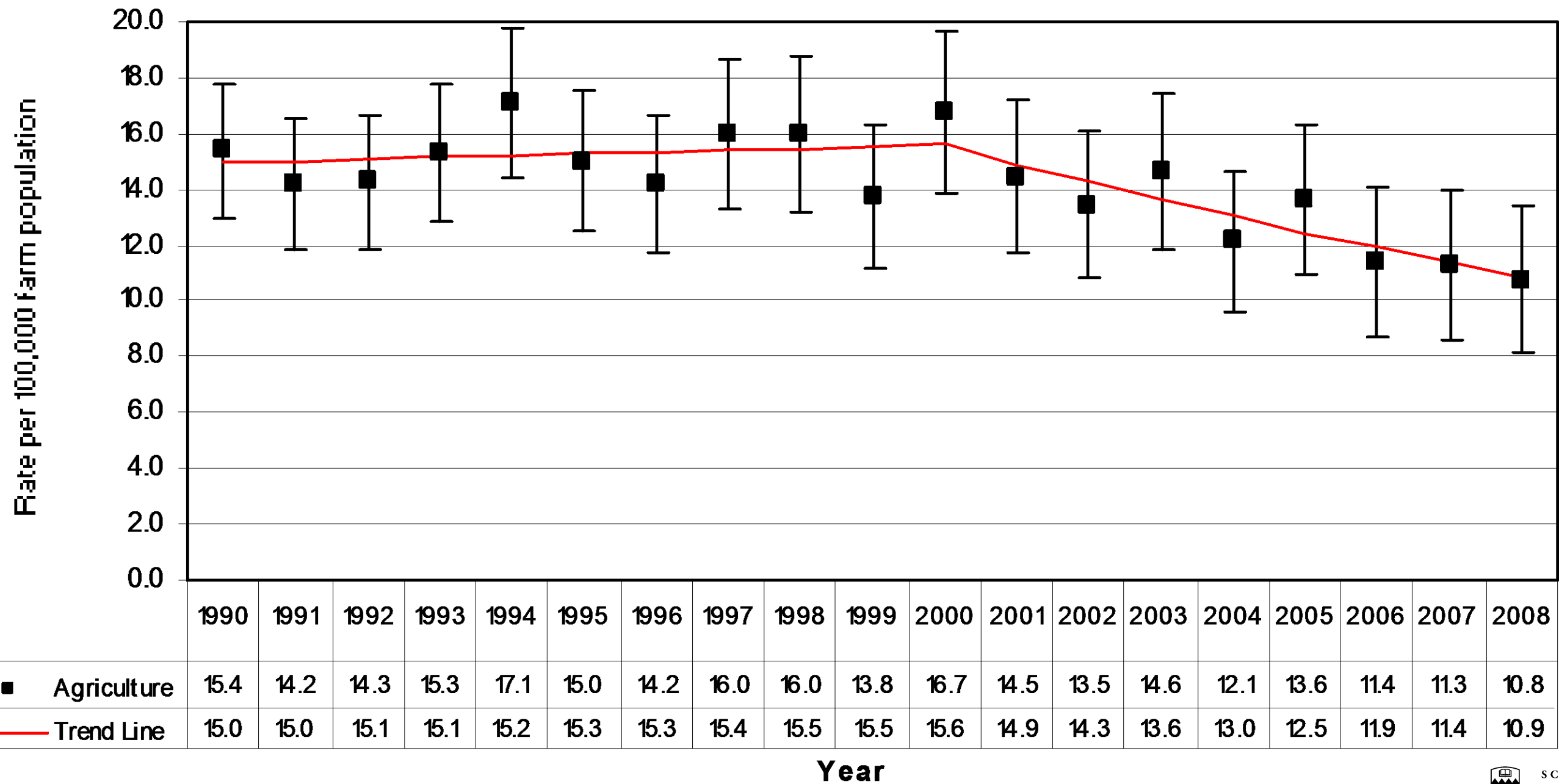
Agricultural fatalities vs Suicide and Motor Vehicle 1990-2007



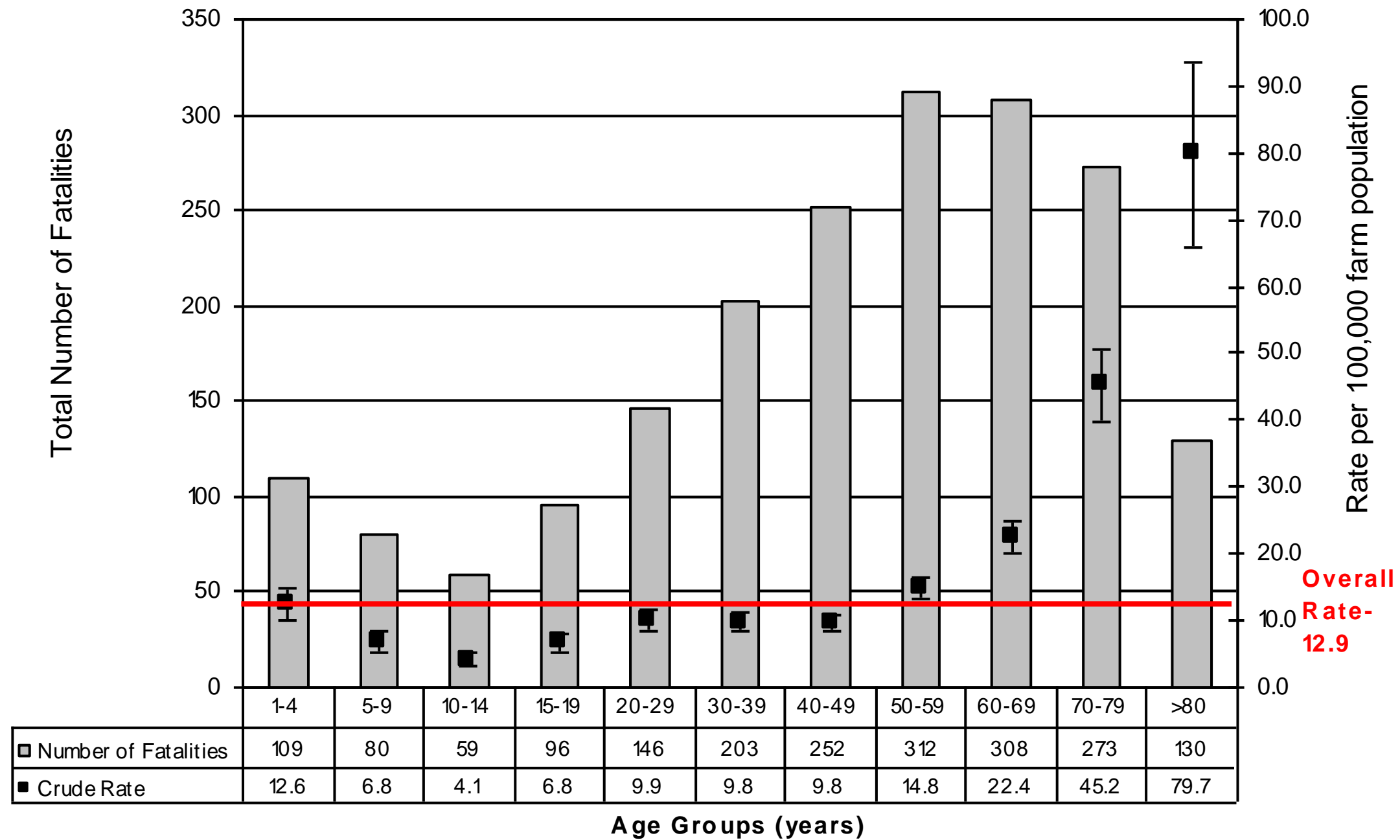
Canadian Agricultural Fatalities 1990-2008



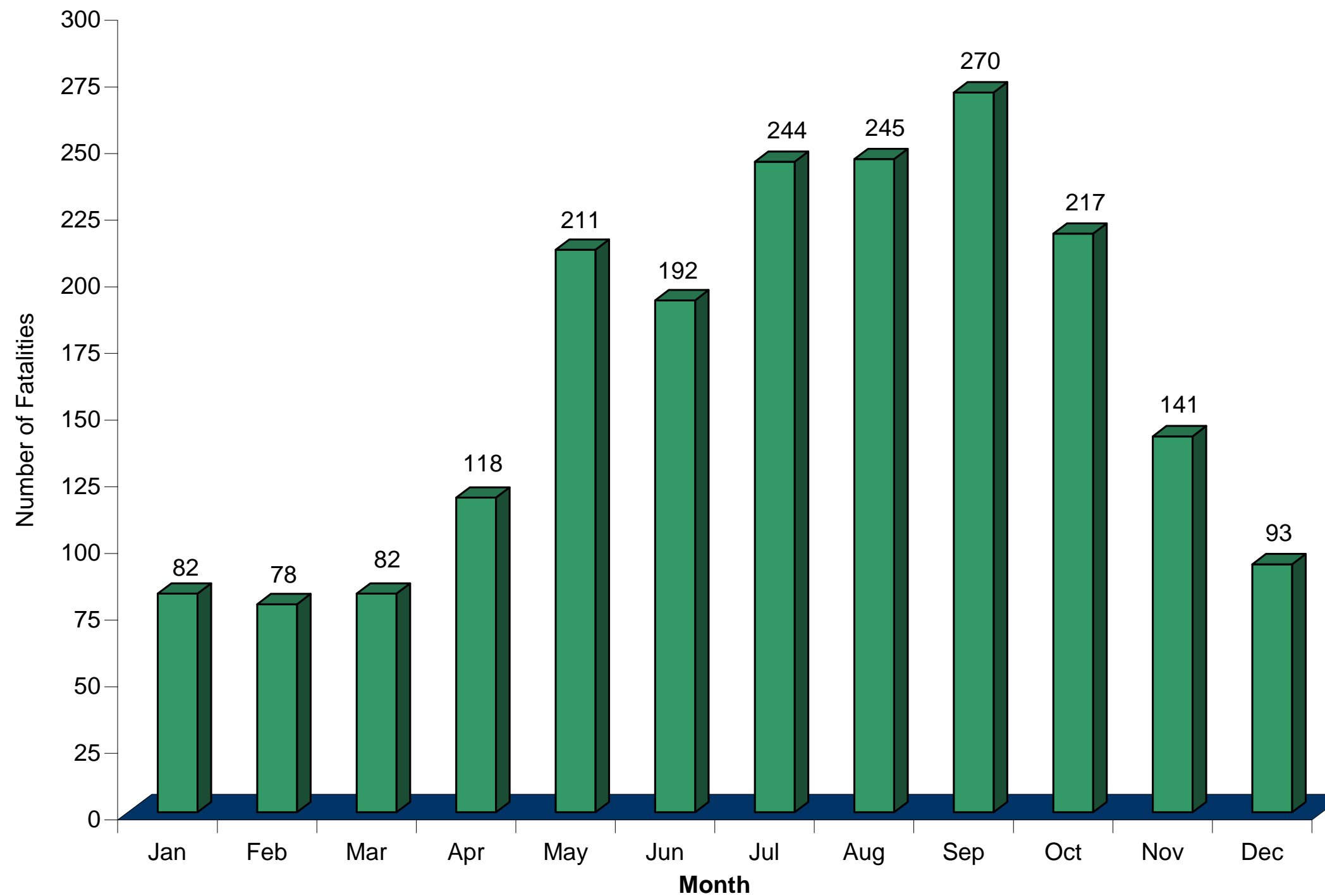
Canadian agricultural fatality rates trends 1990-2008



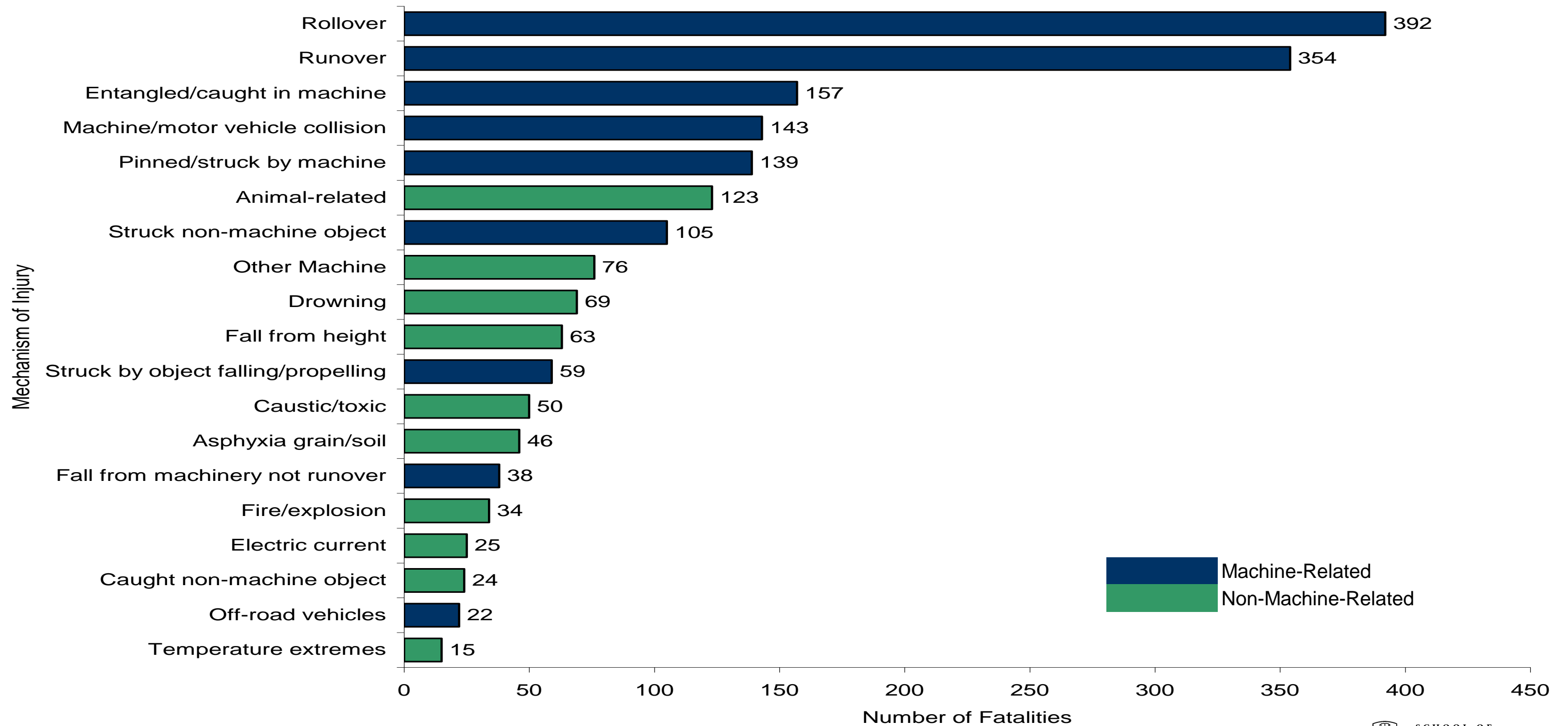
Agricultural fatalities: age groups 1990-2008



Canadian agricultural fatalities: months 1990-2008



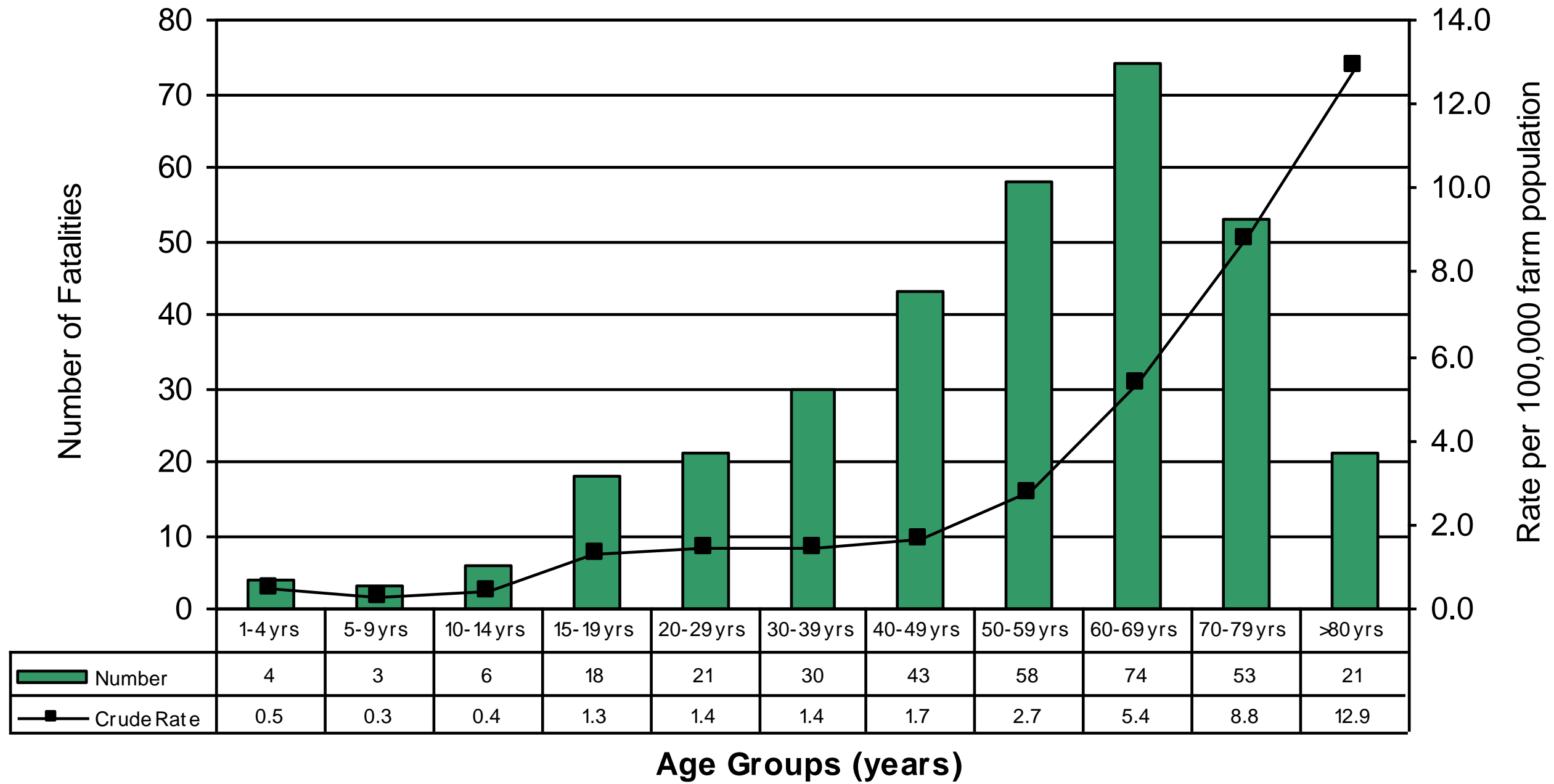
Canadian agricultural fatalities: cause 1990-2008



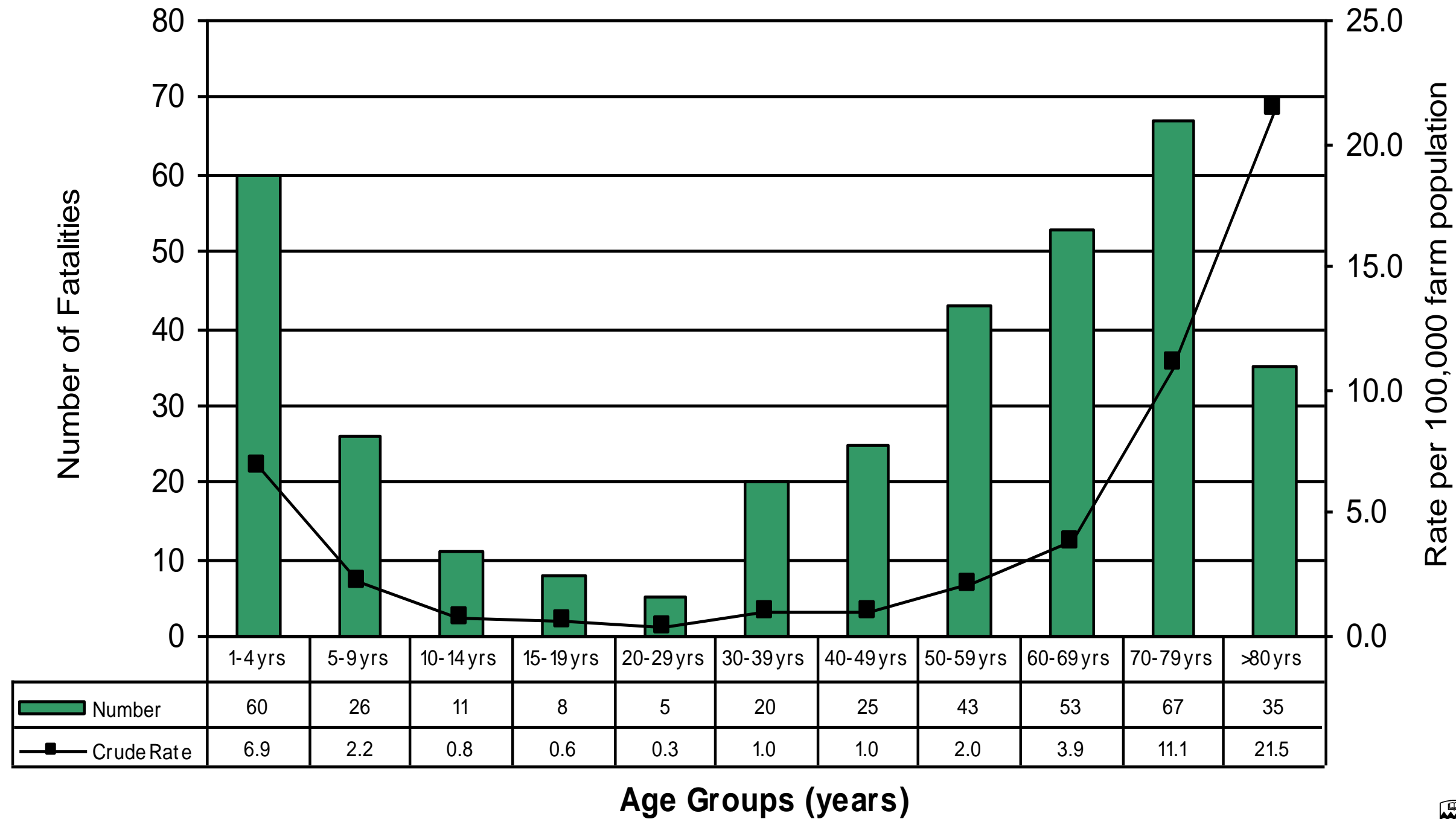
Canadian agricultural fatalities: leading causes 1990-2008

0-19 years	20-39 years	40-59 years	60+ years
Runover by Machinery 34%	Machinery rollovers 17%	Machinery rollovers 21%	Runover by Machinery 25%
Machinery rollovers 15%	Machinery versus traffic collision 13%	Runover by Machinery 13%	Machinery rollovers 23%
Drowning 13%	Entanglement in moving machinery parts 11%	Entanglement in moving machinery parts 11%	Animal-related 9%
Machinery versus traffic collision 5%	Pinned/struck by machine component 8%	Pinned/struck by machine component 9%	Pinned/struck by machine component 7%
Animal-related 5%	Runover by Machinery 8%	Machinery versus traffic collision 8%	Entanglement in moving machinery parts 6%
All other injuries 27%	All other injuries 42%	All other injuries 38%	All other injuries 31%

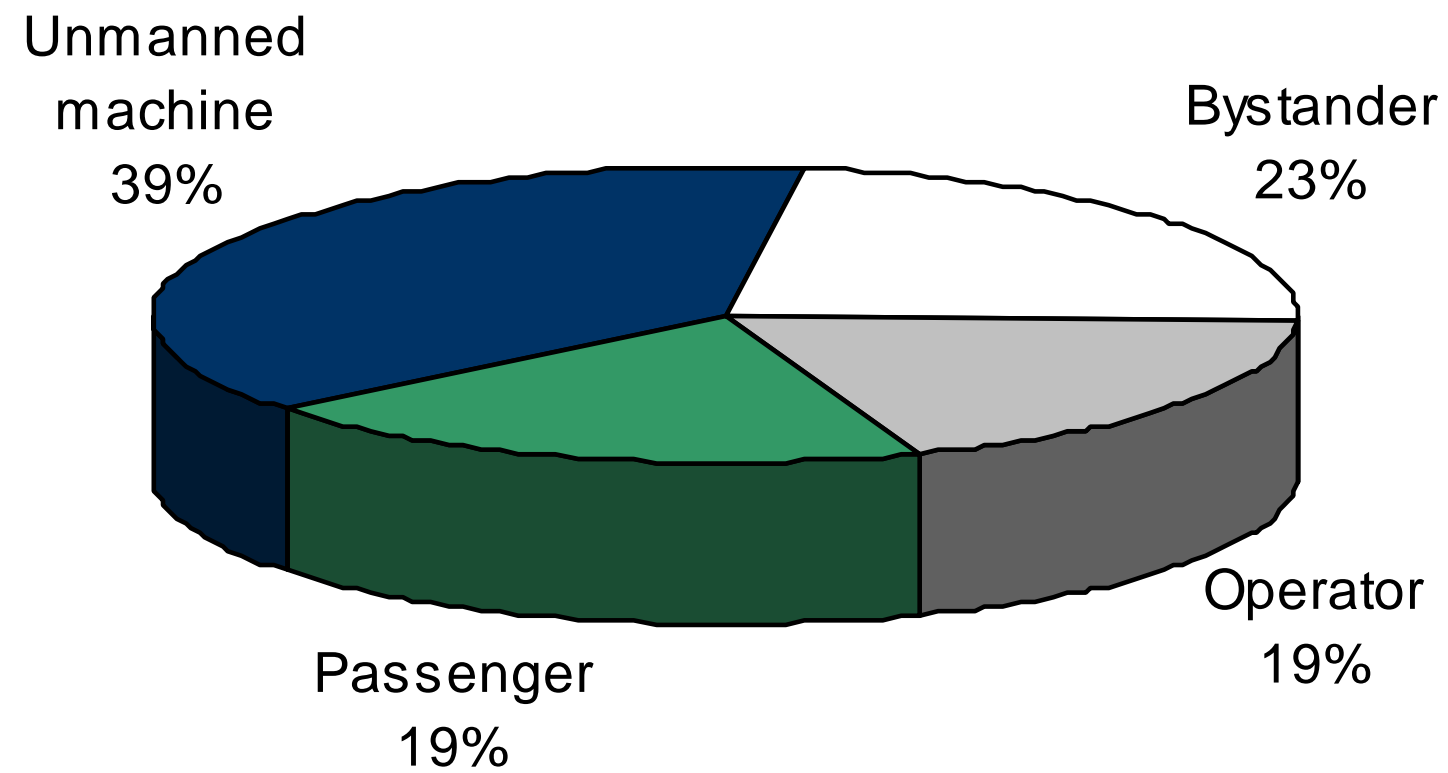
Tractor rollovers: age groups 1990-2008



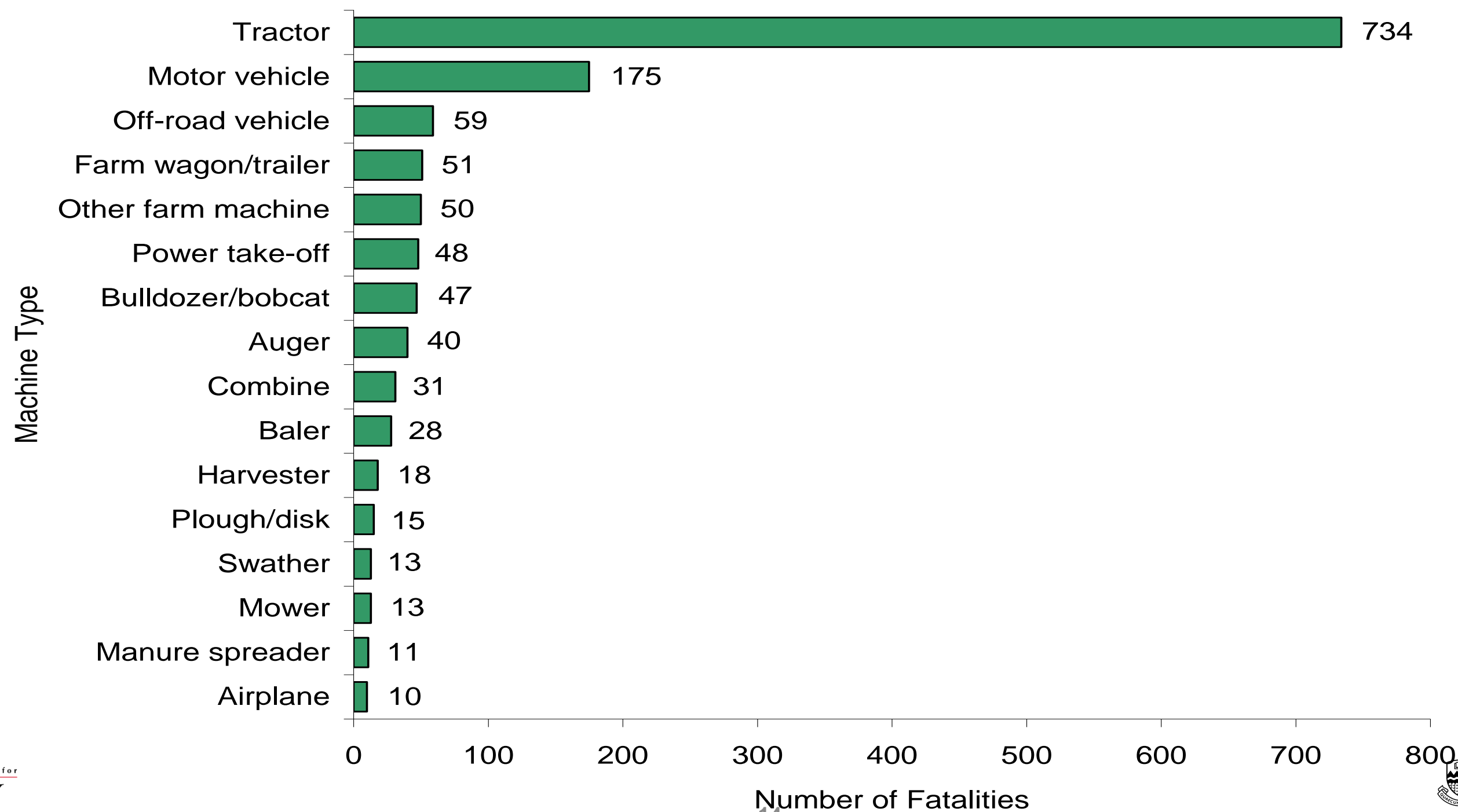
Runovers: age groups 1990-2008



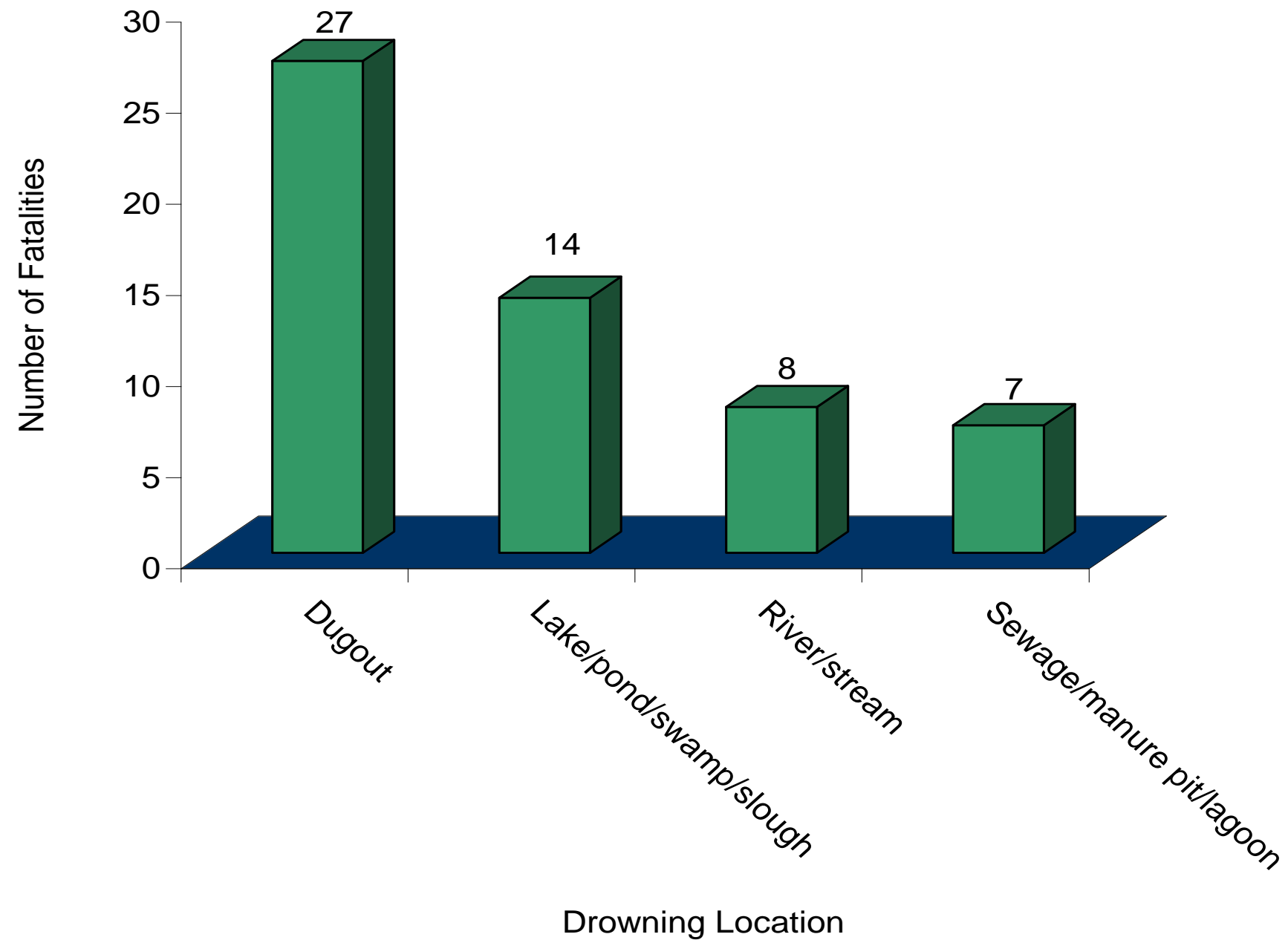
Canadian agricultural machine runover fatalities: categories 1990-2008



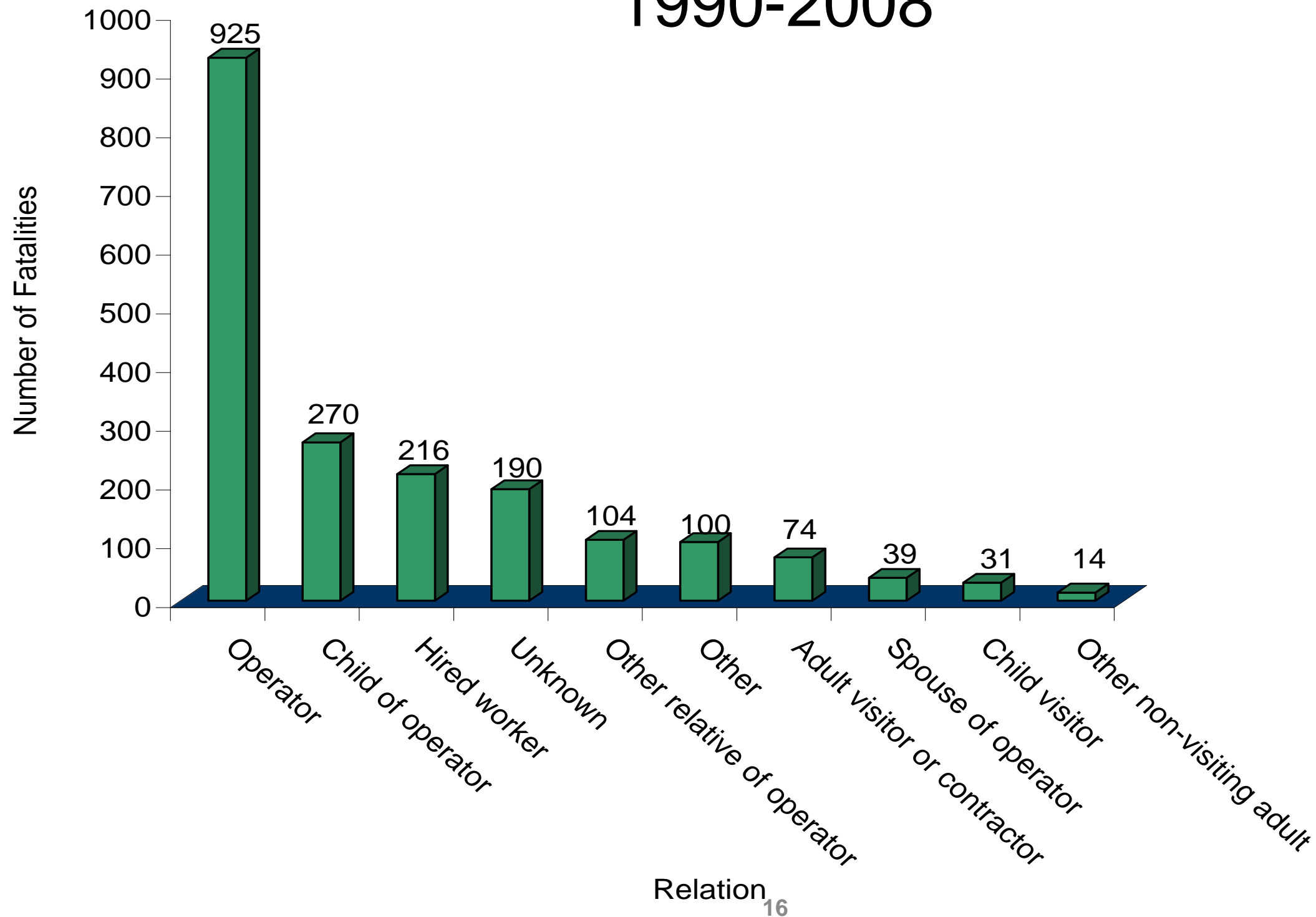
Canadian agricultural machine-related fatalities: machine type 1990-2008



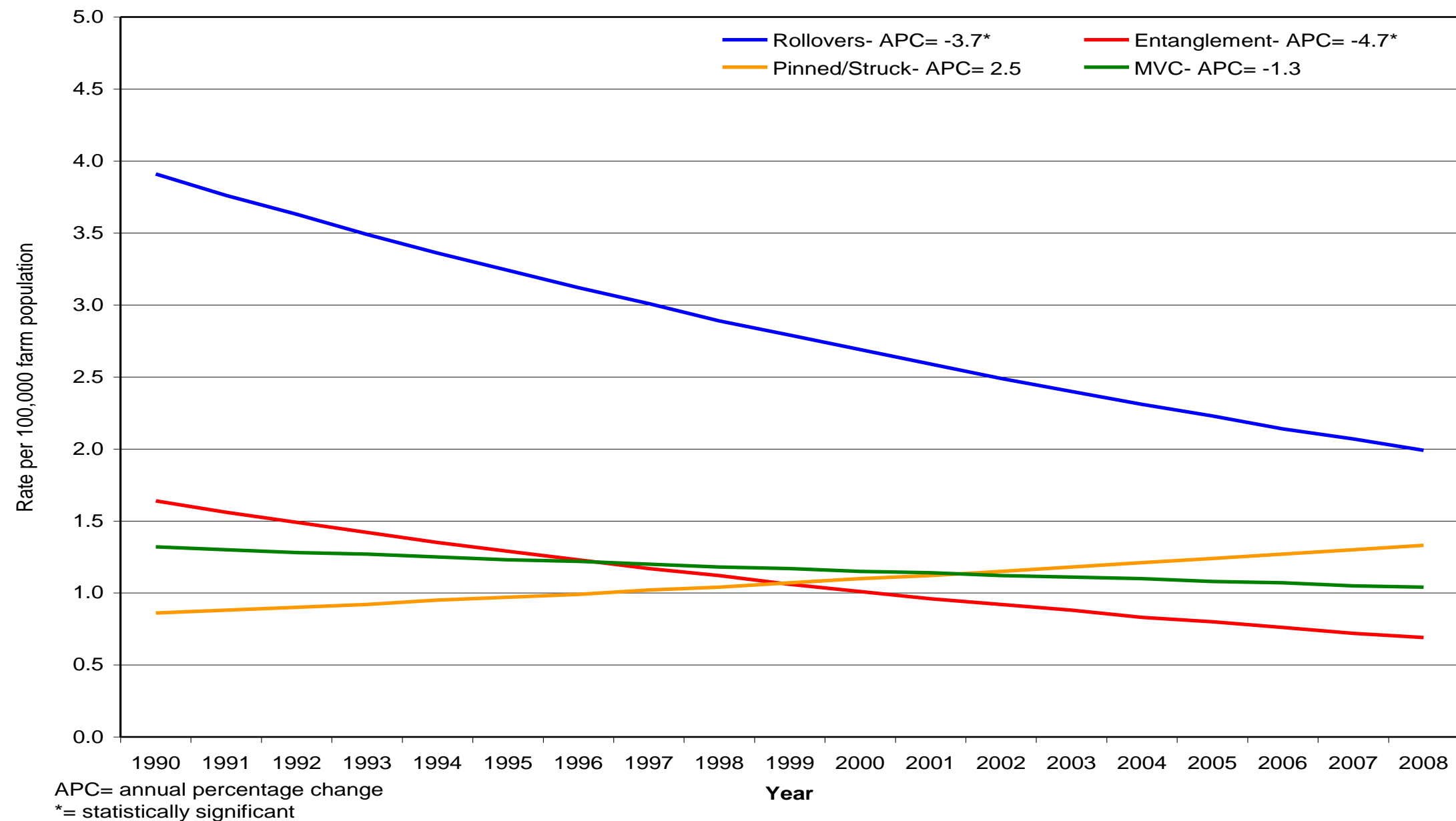
Canadian agricultural drowning fatalities: locations 1990-2008



Canadian agricultural fatalities: relationship to farm owner 1990-2008



Top four mechanisms of injury: calendar year 1990-2008



So What?

- Engineering improvements are contributing to reductions
- Operator error contributing to increases
- Visitors not a major incidence group
- Fatality rate is on a slow decline
- May to November have highest # of fatalities

Thank You

- Colleen Drul, Injury Data Analyst, ACICR
- CAIR/CASA

Canadian Agricultural Safety Association
3325 – C Pembina Highway
Winnipeg MB R3V 0A2
Tel: 1-877-452-2272
www.planfarmsafety.ca
Email: info@casa-acsa.ca